

NMS

TSOP Flasher 2.0 Tutorial

[Xbox Scene Tutorials](#)
[TSOP Flashing Forum](#)
[NMS TSOP Flasher 2.0 Thread](#)

Contents:

1. Introduction & Equipment
2. Acquiring & Identifying an Exploitable Game
3. Changing the BIOS & Dual Boot TSOP
4. Preparing the Memory Card
5. Disassembly & Version Identification
6. Bridging Solder Pads
7. Launching the Exploit
8. Flashing the TSOP
9. Installing XBMC as the dashboard
10. Installing MC360 Skin
11. Creating a Samba Share for XBMC
12. HD Upgrade
- 13.3 Wire Trick for Dead Xbox

Introduction to TSOP Flashing

What is TSOP Flashing? On Version 1.0-1.5 Xboxes the BIOS is stored on a flashable chip known as a TSOP. On a standard Xbox write access to this chip is disabled but it is possible to enable write access by soldering some points on the Xbox motherboard. You can then replace the BIOS removing the need for a Mod-chip. Attention newbie's if there comes a time where you're stuck or unsure please use websites, forums, chat & other references such as the links on the 1st page.

Equipment Required

- Original Microsoft Xbox memory card
Use alternative storage methods at own risk.
- Stock Xbox console
- Modified Xbox console
- TORX T10 & T20 Screwdrivers
- 15-25 watt Soldering iron & solder

Acquiring & Identifying an Exploitable Game

- All Splinter Cell games are exploitable
- The ONLY MechAssault that is exploitable will have the following code written underneath the DVD on the ring in the center: "MS02301L"
- All non-platinum copies of Agent Under Fire are exploitable. Platinum copies have a code located on the front of the DVD below a bunch of white text. Code "1448517" is exploitable where code "1448527" isn't.
- Any problems refer to this forum [Click Here!](#)

Changing the BIOS

The exploit already contains M8plus BIOS which in my opinion is very stable to use for flashing the TSOP, as I have performed on many consoles. Due to high popularity I have now included X2 4981.06, which is already quite similar to the M8plus BIOS. They both have LBA48+ enabled so that partition 6 takes the rest of the drive (F:\). Animations, Trademarks, & Splash logo have all been disabled for faster booting, leaving a stock green "X" logo. They both also boot dashboards in the following banner:

- 1st: default.xbe (XBMC)
- 2nd: evoxdash.xbe (Evolution-X)
- 3rd: xboxdash.xbe (MS dashboard)

It is possible to change all of this by using the BIOS tools provided, but this of course will be at your own risk. EBtools is compatible with X2 4981.06 BIOS & EVtools for M8plus BIOS. Make sure you save it to the BIOS size you require... 1024k BIOS for XBversions 1.0-1.1 and 256k BIOS for XBversions 1.2 to 1.5.

To insert the preferred BIOS open TSOP Flasher.ZIP, which should easily be found within the "saves" folder. The 256k BIOS is found here: Saves\TSOP Flasher.zip\UDATA\21585554\00000000000000\Raincoat\bios.bin

Keep in mind to rename your newer 256k BIOS to "bios.bin"

The 1024k BIOS is found here: Saves\TSOP

Flasher.zip\UDATA\21585554\00000000000000\Flasher\bios\1024k BIOS.bin

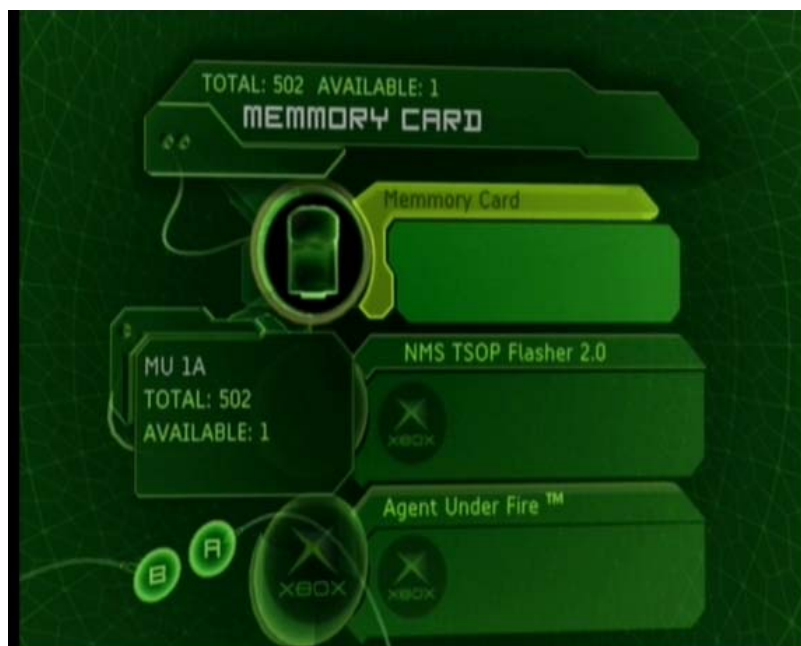
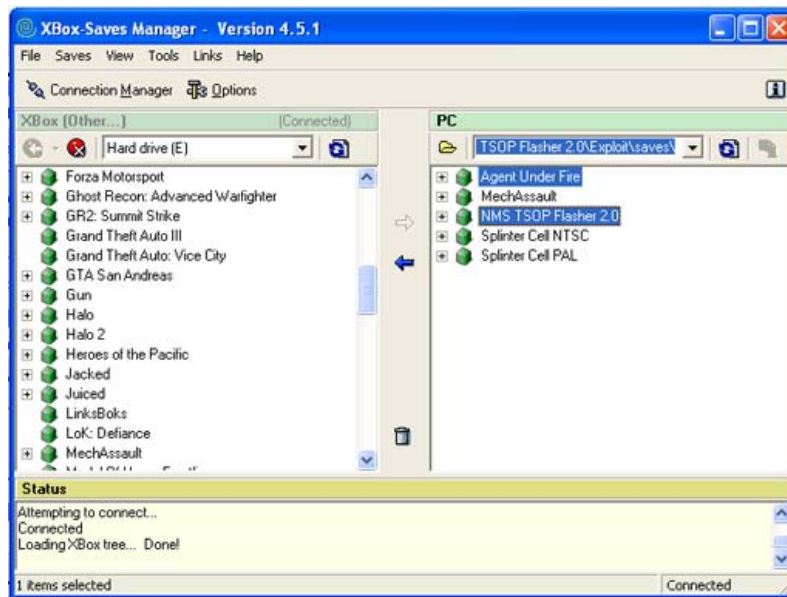
The renaming of the file isn't necessary but might have to delete the existing BIOS to make room for it to all fit on the memory card.

Dual Boot TSOP

I haven't personally tried this but have included a Dual Boot Tutorial which I picked up from Xbox-Scene. Basically follow this guide for the soldering the switch. Create a 512k BIOS and replace it with the 1024k BIOS for the flashing side of it, but I'm not sure when it comes to "Version Specific BIOS". So there might be some researching involved

Preparing the Memory Card

- Before transferring backup or delete any save games that might be for either of the exploitable games...
- Launch the XSaveMgr.exe found within the “exploit” folder
- Create a connection to the Xbox
- It is compulsory to transfer the “NMS TSOP Flasher 2.0” save
- And also transfer the save for the exploitable game you have
- Once both saves are on the modified Xbox transfer them to the memory card through the original MS dashboard.



Disassembly & Version Identification

- There is a tutorial provided for the disassembly of the Xbox
- When following this tutorial stop once you reach the motherboard as it maybe unnecessary to take it out depending on the version of xbox.
- To identify your Xbox version follow this guide [Click Here!](#) (HTML)
- Xbox version's 1.0 & 1.1 is necessary to remove the motherboard.
- Xbox version's 1.2 to 1.5 is optional to remove the motherboard.

Bridging Solder Pads

XBversions 1.0 & 1.1

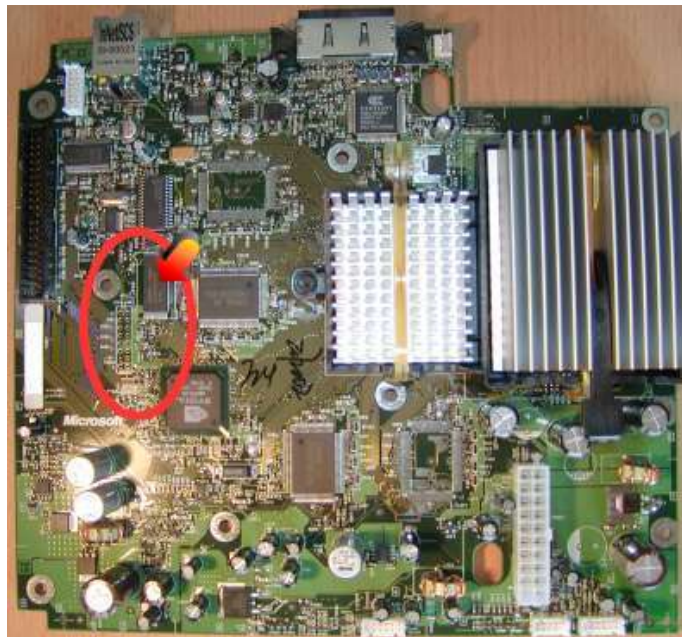
- For Xbox versions **1.0 & 1.1** it is necessary to bridge 2 sets of solder pads in order to enable write access to the TSOP.



- Above image shows the location of the 1st point on top of the motherboard.
- Below image shows the location of the 2nd point on the bottom of the motherboard.

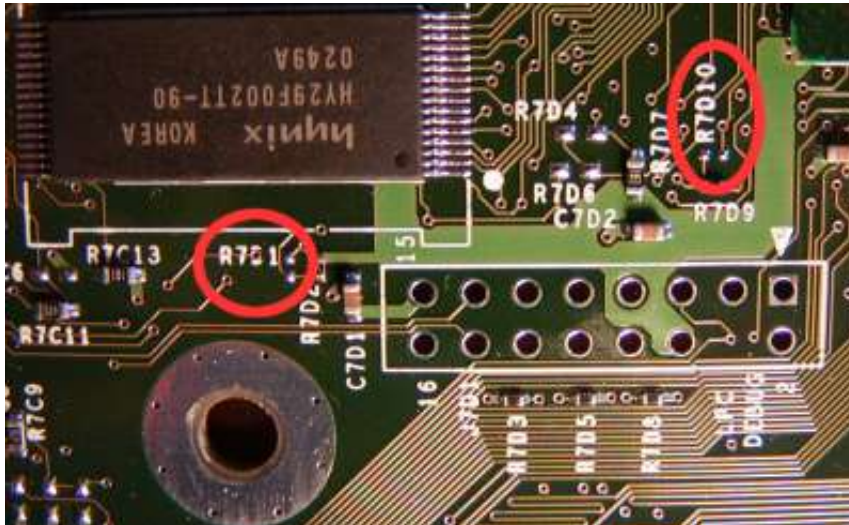


- **IMPORTANT!** If you have a SHARP brand of TSOP you need to make a 3rd connection as shown below but DO NOT do this with any other brand of TSOP or may fry the chip. Further down is a picture showing the location of the TSOP.



XBversions 1.2 to 1.5

- For Xbox versions **1.2 to 1.5** it is also necessary to bridge 2 sets of solder pads in order to enable write access to the TSOP but both points are located on top of the motherboard making it possible to solder without removing the motherboard.



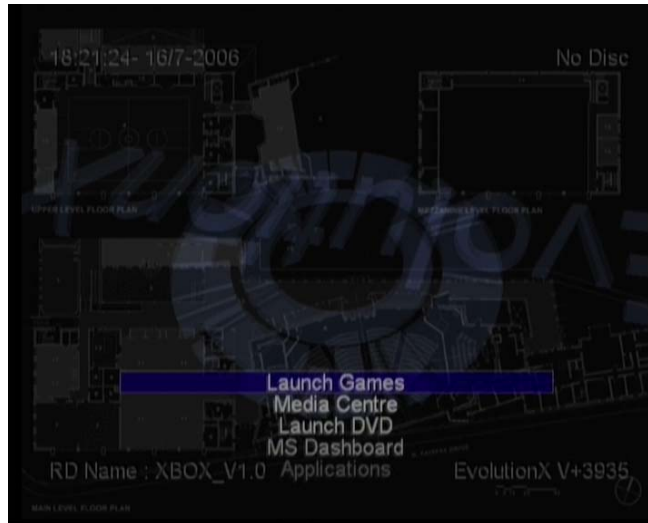
- Done, no more soldering... You can reassemble your xbox or just fit together without screws.

Launching the exploit

- Insert the memory card into the unmodified Xbox
- Transfer the save games to the Xbox's hard drive
- Now launch the exploitable game you have
- And launch the save game (shouldn't be hard)

Flashing the TSOP

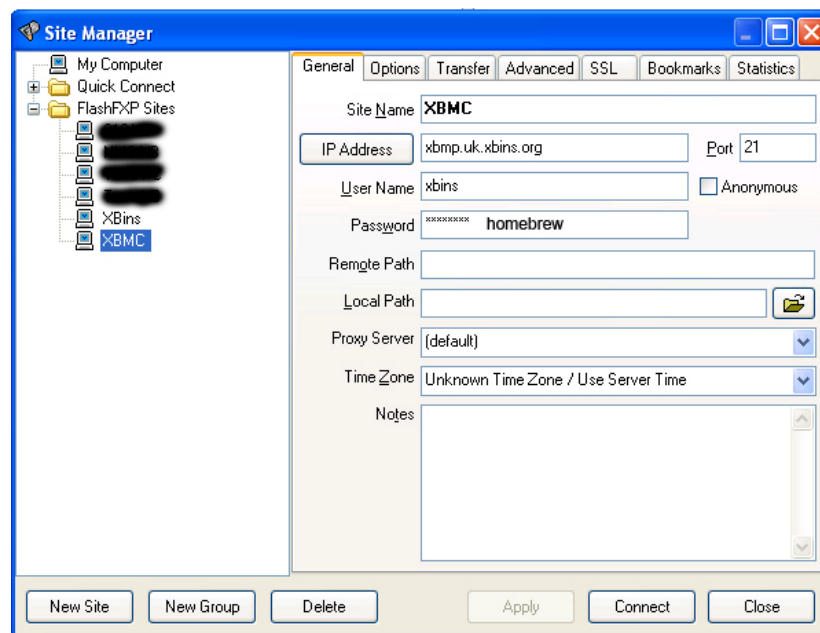
- Once in NMS TSOP Flasher you can install Evolution-X to your C directory before the actual flash. It is also possible to install a shortcut XBE to e:\Apps to return to the exploit. (saves you from launching the exploit again)
- Within "Flashing" option, select the Xbox version you wish to flash then select the BIOS
- Xbox versions 1.0 & 1.1 will ask you to press "Y" to continue, do so. Once complete your Xbox will shutdown.
- Xbox versions 1.2 to 1.5 will run raincoat and then shutdown once complete.
- Turn your Xbox on. You will firstly notice the different BIOS where the opening animation is no longer there for quicker loading. If you had installed Evolution-X earlier it would have launched it as the dashboard. Take in mind that it is only a basic dashboard as shown below:



- I don't think it is necessary to remove the bridged solder pads, plus it makes it possible for future re-flash.
- The actual TSOP Flashing side of the mod is complete but if you like to continue I will explain how to install XBMC.
- XBMC is a very popular dashboard which allows you're to play backed up games from your HD and can play any audio and video format you can think of and much much more...

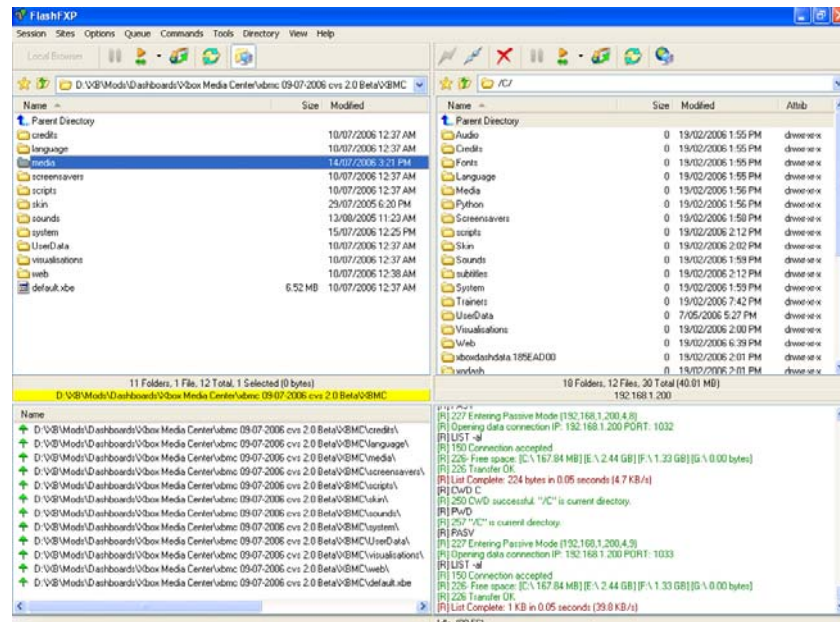
Installing XBMC as the Dashboard

- Using a FTP client access XBMC FTP server, as shown below.



- Download the latest XBMC.rar

- Extract the archive and transfer the “content” of XBMC to the “root” of C:\ of your Xbox.
- If you are using the Evolution-X dashboard it has network already setup to use IP “192.168.1.210”



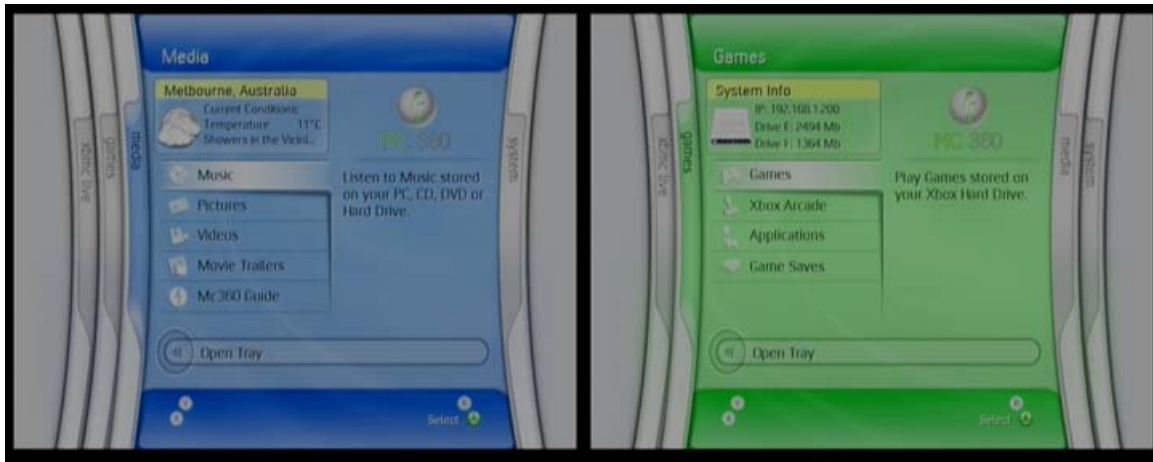
- Reset your Xbox console...
- If you were not already aware you can reset by holding both trigger buttons along with ‘back’ and ‘black’ or ‘start’... You’ll work it out.
- Once the xbox boots you should see something like this:



- It is as simple as repeating the steps to update it too & overwrite everything. It is better to check out their readme.txt/nfo.

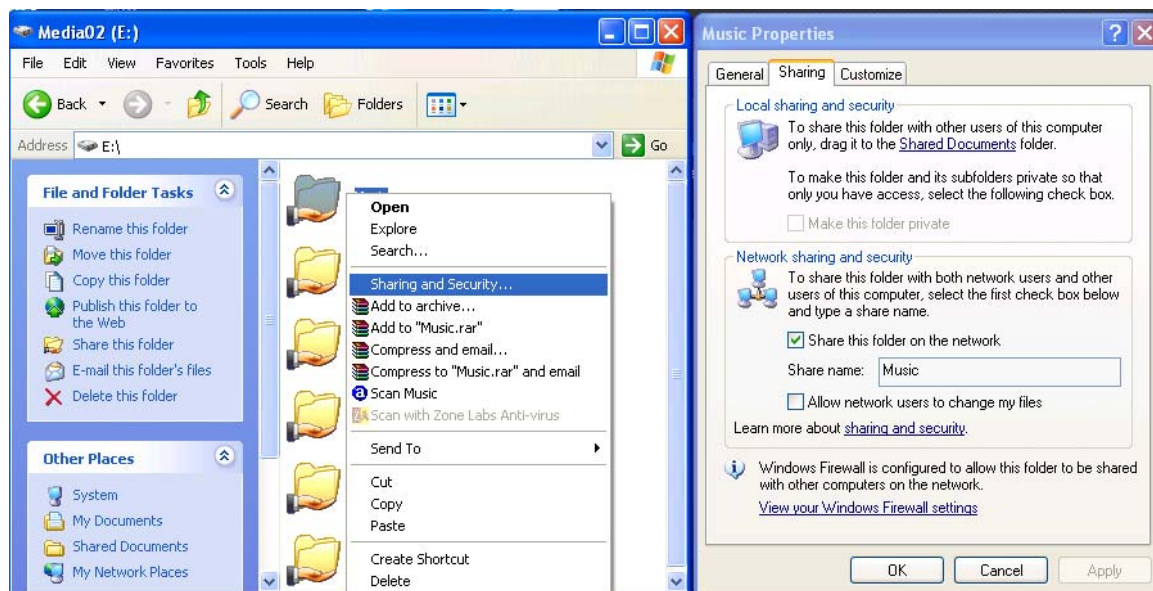
Installing MS360 Skin

- MC360 is an Xbox360 skin replica for Xbox 1
- Download the skin from Blackbolts website [Click Here!](#)
- Extract the archive and transfer the MC360 folder to C:\skin\ directory of your xbox.
- Within XBMC go to Settings\Appearance\Look and Feel\Skin and change it to MC360 to get to look like the below picture.



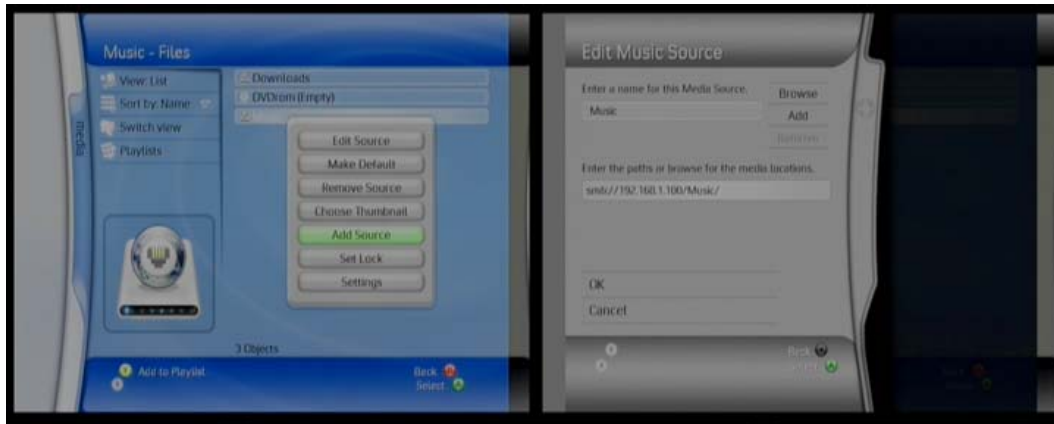
Creating a Samba Share for XBMC

- This is a very cool way to share your media from your PC to your xbox
- Firstly right click on the folder you wish to share and go to “Sharing and Security”
- Within the next window check the “share this folder on the network” option



- On your Xbox console within either Pictures, Music or Videos press the white button and “Add Source”

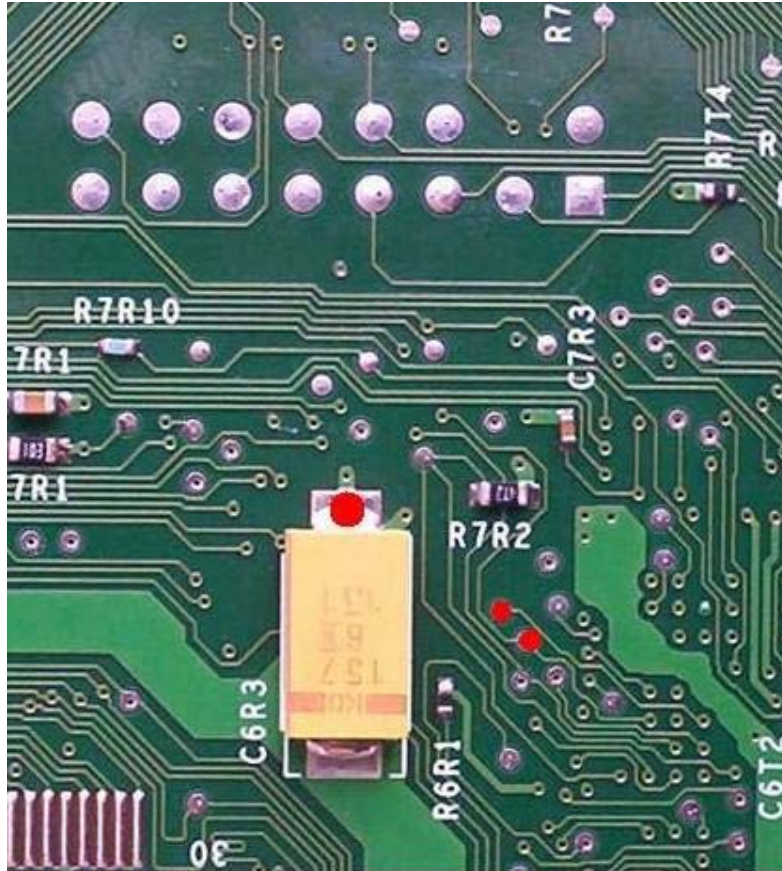
- Then Enter the name you want for it and the path which is `smb://your.pc.ip.here/name of shared folder/`
- Ta Da! Now you can stream all the media you want



HD Upgrade

- Before we go to far it is recommended to create a backup of C:\, E:\ and F:\ drive if you have it. But we're mainly after the contents of C:\ and UDATA+TDATA from E:\ drive.
- Right click on the provided .ISO and open with a burning application such as Nero or Alcohol and burn it to either CDr or DVD-r roms
- Before removing the exciting HD, launch ConfigMagic from the rom and Unlock the HD. Making it possible to use the HD in your PC or elsewhere.
- NOTE: The largest size HD possible to install on a Xbox is 500Gb (IDE)
- To install the newer HD disassemble the console using the tutorial provided and just basically replace the exciting one. Make sure the HD is set on "Cable Select" otherwise in may not boot...
- Re-assemble the Xbox or just sit it together and turn it on with the CD/DVD inserted in the DVD-rom
- Once the CD/DVD loads format the hard drive using XBpartitioner.
- Install Evox and reboot without the CD/DVD and install your back-up
- It is only necessary to lock the HD to launch an original BIOS, in our case it isn't...

3 Wire Trick for Dead Xbox



- 1: Solder a wire to each point highlighted in red
- 2: Twist the ends together to bridge them
- 3: Your XBOX should boot normally
- 4: Untwist the wires and reflash using a 1mb bios

Enjoy and post any feedback or bug reports to my thread [Click Here!](#)



NeMesiS